

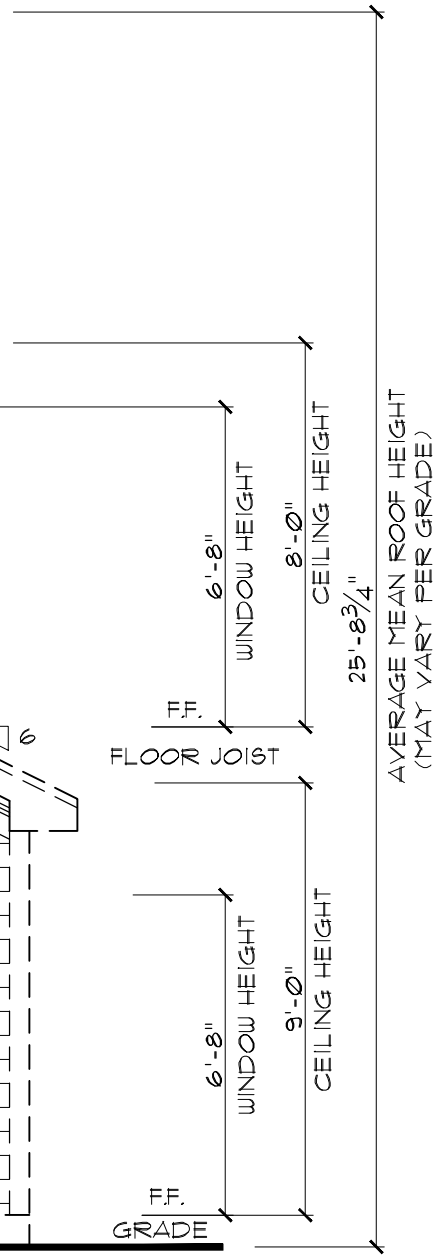


FRONT ELEVATION-"A"
SCALE: 1/4"=1'

ATTIC VENTILATION

1363 SQ. FT. OF ATTIC / 300 = 4.54 SQ. FT. OF INLET AND OUTLET.

VENTILATION MAY BE REDUCED 50% WHEN VENTILATORS ARE USED AT LEAST 3'-0" ABOVE THE CORNICE VENTS.



LEFT SIDE ELEVATION-"A"
SCALE: 1/4"=1'

www.frazierhomedesign.com
FRAZIER HOME DESIGN, LLC.
 2840 PLAZA PLACE, SUITE 320
 RALEIGH, NC 27612
 OFFICE: (919)-424-7245

GARY ROBINSON HOMES
"THE INVERNESS"

DATE:	07/25/2012
DRAWN BY:	JJ
REVISION DATE:	01/22/2014 JJ

ELEVATION - A

SHEET NO.
A1



RIGHT SIDE ELEVATION-"A"

SCALE: 1/4"=1'



REAR ELEVATION-"A"

SCALE: 1/4"=1'

GARY ROBINSON HOMES
"THE INVERNESS"

DATE: 07/25/2012
 DRAWN BY: JJ
 REVISION DATE: 01/22/2014 JJ

ELEVATION - A

SHEET NO.
A2



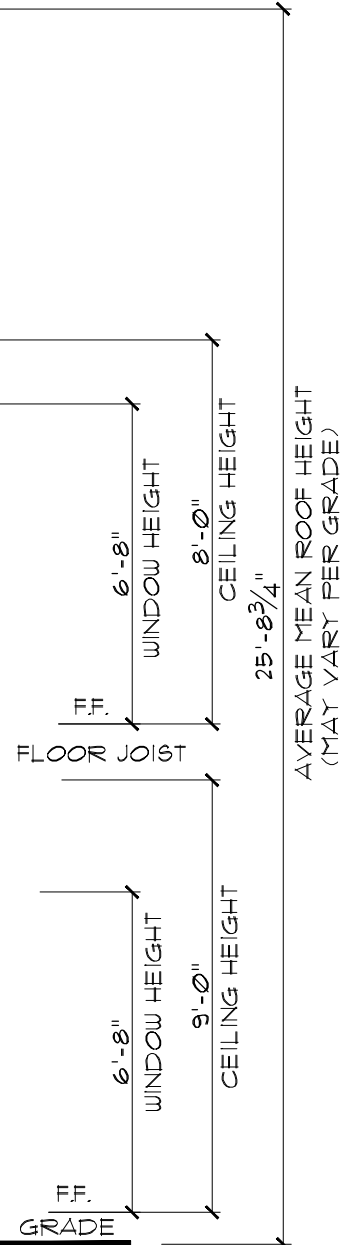
FRONT ELEVATION-"B"

SCALE: 1/4"=1'

ATTIC VENTILATION

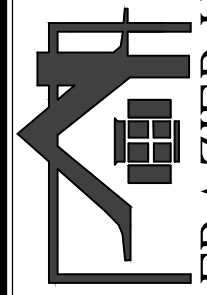
1363 SQ. FT. OF ATTIC / 300 = 4.54 SQ. FT. OF INLET AND OUTLET.

VENTILATION MAY BE REDUCED 50% WHEN VENTILATORS ARE USED AT LEAST 3'-0" ABOVE THE CORNICE VENTS.



LEFT SIDE ELEVATION-"B"

SCALE: 1/4"=1'



www.frazierhomedesign.com
FRAZIER HOME DESIGN, LLC.
 2840 PLAZA PLACE, SUITE 320
 RALEIGH, NC 27612
 OFFICE: (919)-424-7245

GARY ROBINSON HOMES
"THE INVERNESS"

DATE: 07/25/2012
 DRAWN BY: JJ
 REVISION DATE: 01/22/2014 JJ

ELEVATION - B

SHEET NO.
A3



RIGHT SIDE ELEVATION-"B"

SCALE: 1/4"=1'



REAR ELEVATION-"B"

SCALE: 1/4"=1'

GARY ROBINSON HOMES
"THE INVERNESS"

DATE: 07/25/2012
 DRAWN BY: JJ
 REVISION DATE: 01/22/2014 JJ

ELEVATION - B

SHEET NO.
A4

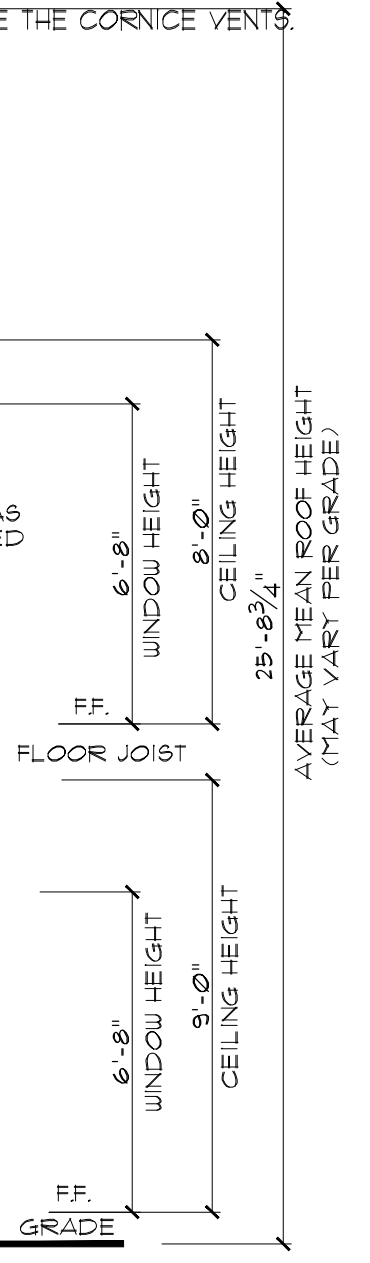


FRONT ELEVATION-"C"
SCALE: 1/4"=1'

ATTIC VENTILATION

1363 SQ. FT. OF ATTIC / 300 = 4.54 SQ. FT. OF INLET AND OUTLET.

VENTILATION MAY BE REDUCED 50% WHEN VENTILATORS ARE USED AT LEAST 3'-0" ABOVE THE CORNICE VENTS.



LEFT SIDE ELEVATION-"C"
SCALE: 1/4"=1'

www.frazierhomedesign.com
FRAZIER HOME DESIGN, LLC.
 2840 PLAZA PLACE, SUITE 320
 RALEIGH, NC 27612
 OFFICE: (919)-424-7245

GARY ROBINSON HOMES
"THE INVERNESS"

DATE:	07/25/2012
DRAWN BY:	JJ
REVISION DATE:	01/22/2014 JJ

ELEVATION - C

SHEET NO.
A5



RIGHT SIDE ELEVATION-"C"
SCALE: 1/4"=1'

OPTIONAL FIREPLACE



REAR ELEVATION-"C"
SCALE: 1/4"=1'

GARY ROBINSON HOMES
"THE INVERNESS"

DATE:	07/25/2012
DRAWN BY:	JJ
REVISION DATE:	01/22/2014 JJ

ELEVATION - C

SHEET NO.
A6

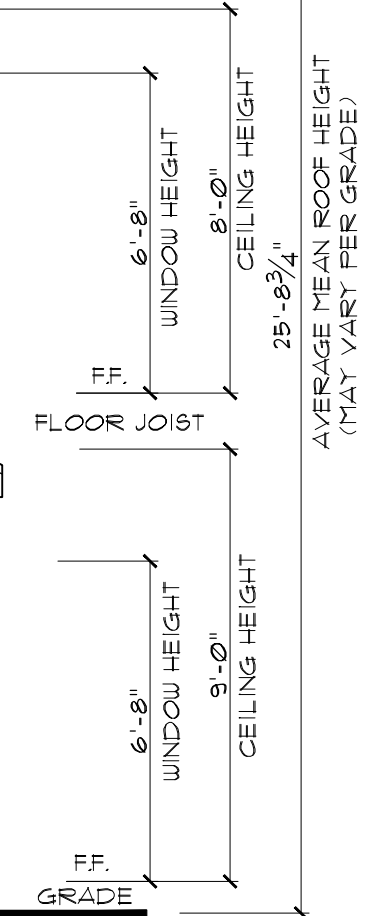


FRONT ELEVATION-"D"
SCALE: 1/4"=1'

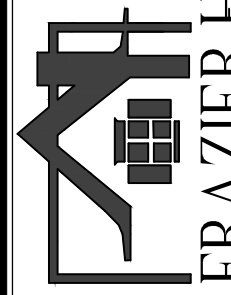
ATTIC VENTILATION

1363 SQ. FT. OF ATTIC / 300 = 4.54 SQ. FT. OF INLET AND OUTLET.

VENTILATION MAY BE REDUCED 50% WHEN VENTILATORS ARE USED AT LEAST 3'-0" ABOVE THE CORNICE VENTS.



LEFT SIDE ELEVATION-"D"
SCALE: 1/4"=1'



www.frazierhomedesign.com
FRAZIER HOME DESIGN, LLC.
 2840 PLAZA PLACE, SUITE 320
 RALEIGH, NC 27612
 OFFICE: (919)-424-7245

GARY ROBINSON HOMES
"THE INVERNESS"

DATE: 07/25/2012
 DRAWN BY: JJ
 REVISION DATE: 01/22/2014 JJ

ELEVATION - D

SHEET NO.
A7



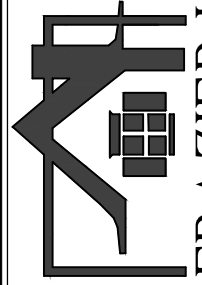
RIGHT SIDE ELEVATION-"D"

SCALE: 1/4"=1'



REAR ELEVATION-"D"

SCALE: 1/4"=1'



www.frazierhomedesign.com

FRAZIER HOME DESIGN, LLC.

2840 PLAZA PLACE, SUITE 320

RALEIGH, NC 27612

OFFICE: (919)-424-7245

GARY ROBINSON HOMES

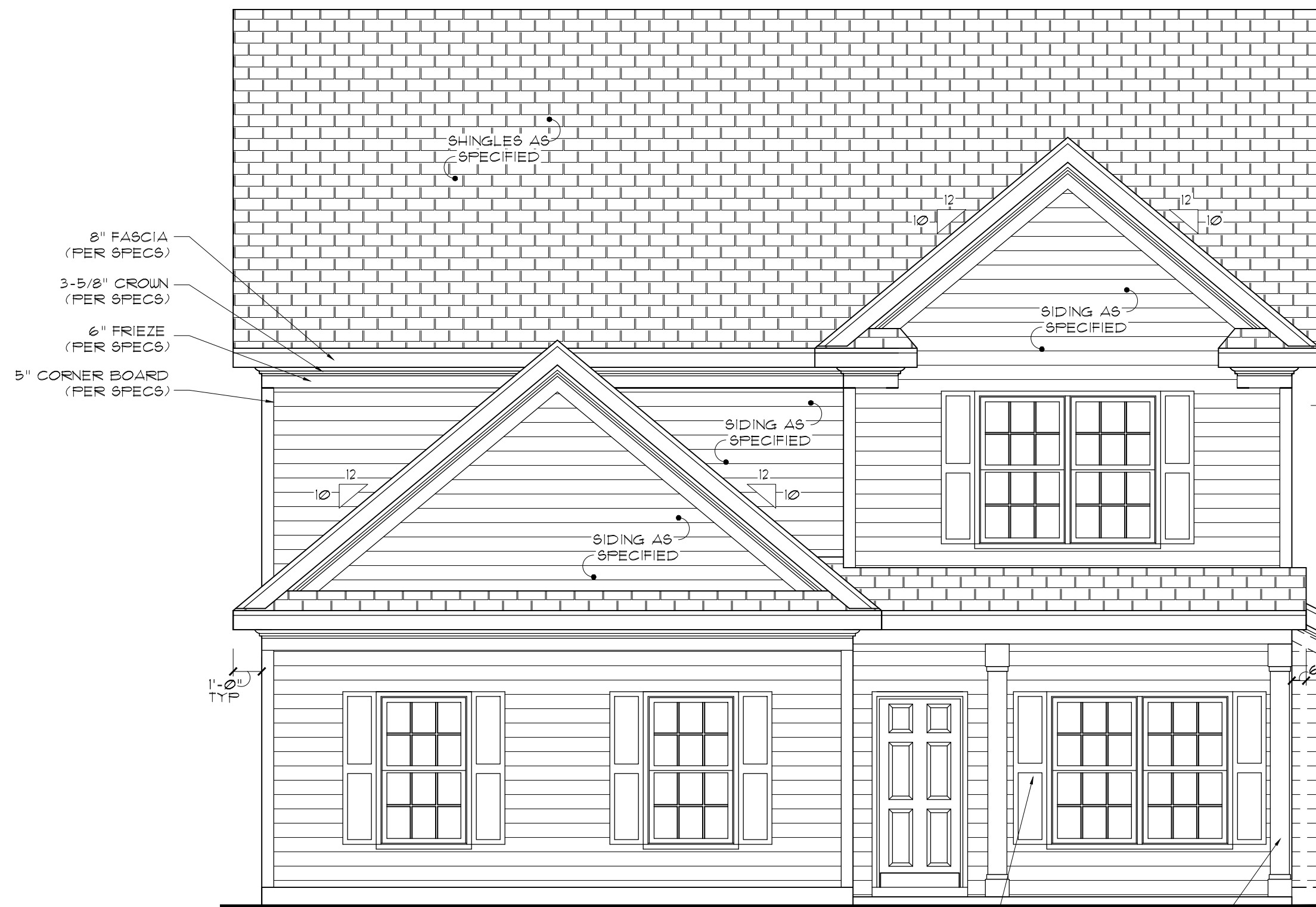
"THE INVERNESS"

DATE: 07/25/2012
 DRAWN BY: JJ
 REVISION DATE: 01/22/2014 JJ

ELEVATION - D

SHEET NO.

A8

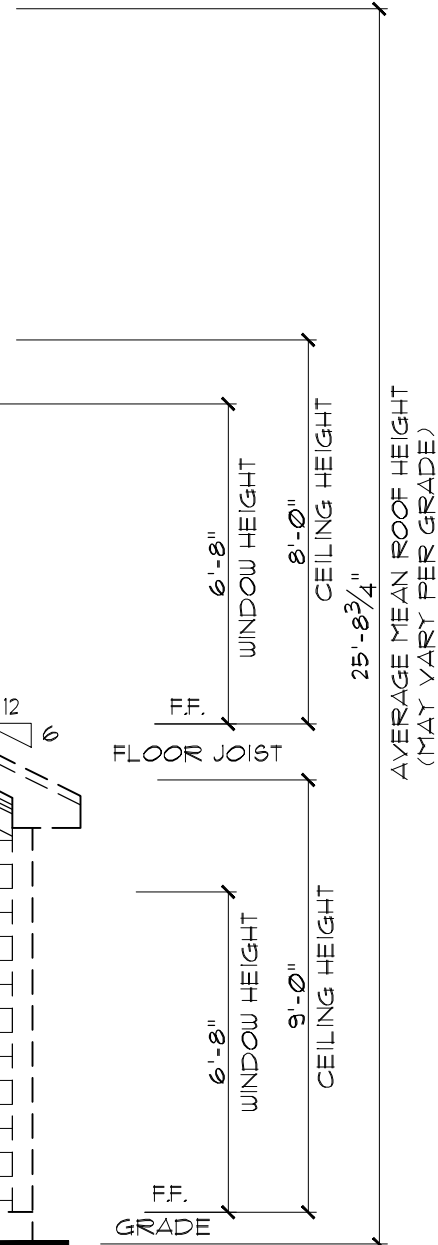


**SIDELOAD OPTION
FRONT ELEVATION-"A"**
SCALE: 1/4"=1'

ATTIC VENTILATION

1363 SQ. FT. OF ATTIC / 300 = 4.54 SQ. FT. OF INLET AND OUTLET.

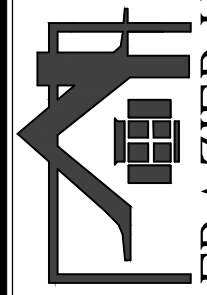
VENTILATION MAY BE REDUCED 50% WHEN VENTILATORS ARE USED AT LEAST 3'-0" ABOVE THE CORNICE VENTS.



14" SHUTTERS (PER SPECS)
8"X8" RND COLUMN (PER SPECS)



**SIDELOAD OPTION
LEFT SIDE ELEVATION-"A"**
SCALE: 1/4"=1'



www.frazierhomedesign.com
FRAZIER HOME DESIGN, LLC.
2840 PLAZA PLACE, SUITE 320
RALEIGH, NC 27612
OFFICE: (919)-424-7245

GARY ROBINSON HOMES
"THE INVERNESS"

DATE: 07/25/2012
DRAWN BY: JJ
REVISION DATE: 01/22/2014 JJ

SIDELOAD OPT A

SHEET NO.
A9

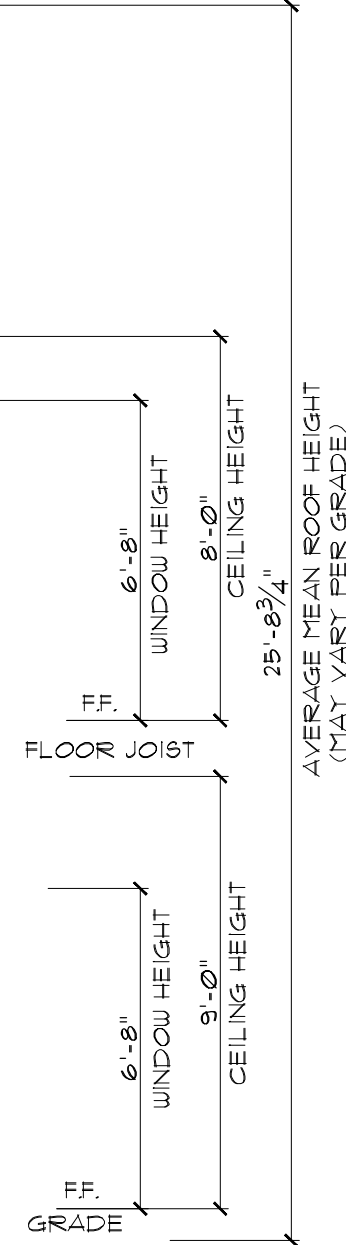


**SIDELOAD OPTION
FRONT ELEVATION-"B"**
SCALE: 1/4"=1'

ATTIC VENTILATION

1363 SQ. FT. OF ATTIC / 300 = 4.54 SQ. FT. OF INLET AND OUTLET.

VENTILATION MAY BE REDUCED 50% WHEN VENTILATORS ARE USED AT LEAST 3'-0" ABOVE THE CORNICE VENTS.



**SIDELOAD OPTION
LEFT SIDE ELEVATION-"B"**
SCALE: 1/4"=1'

www.frazierhomedesign.com
FRAZIER HOME DESIGN, LLC.
 2840 PLAZA PLACE, SUITE 320
 RALEIGH, NC 27612
 OFFICE: (919)-424-7245

GARY ROBINSON HOMES
"THE INVERNESS"

DATE:	07/25/2012
DRAWN BY:	JJ
REVISION DATE:	01/22/2014 JJ

SIDELOAD OPT B

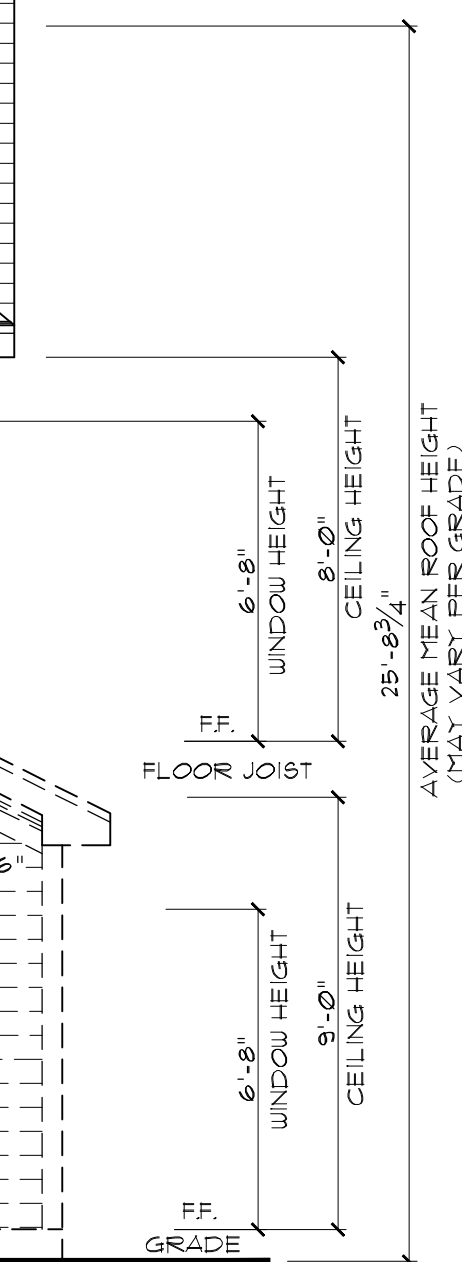
SHEET NO.
A10



ATTIC VENTILATION

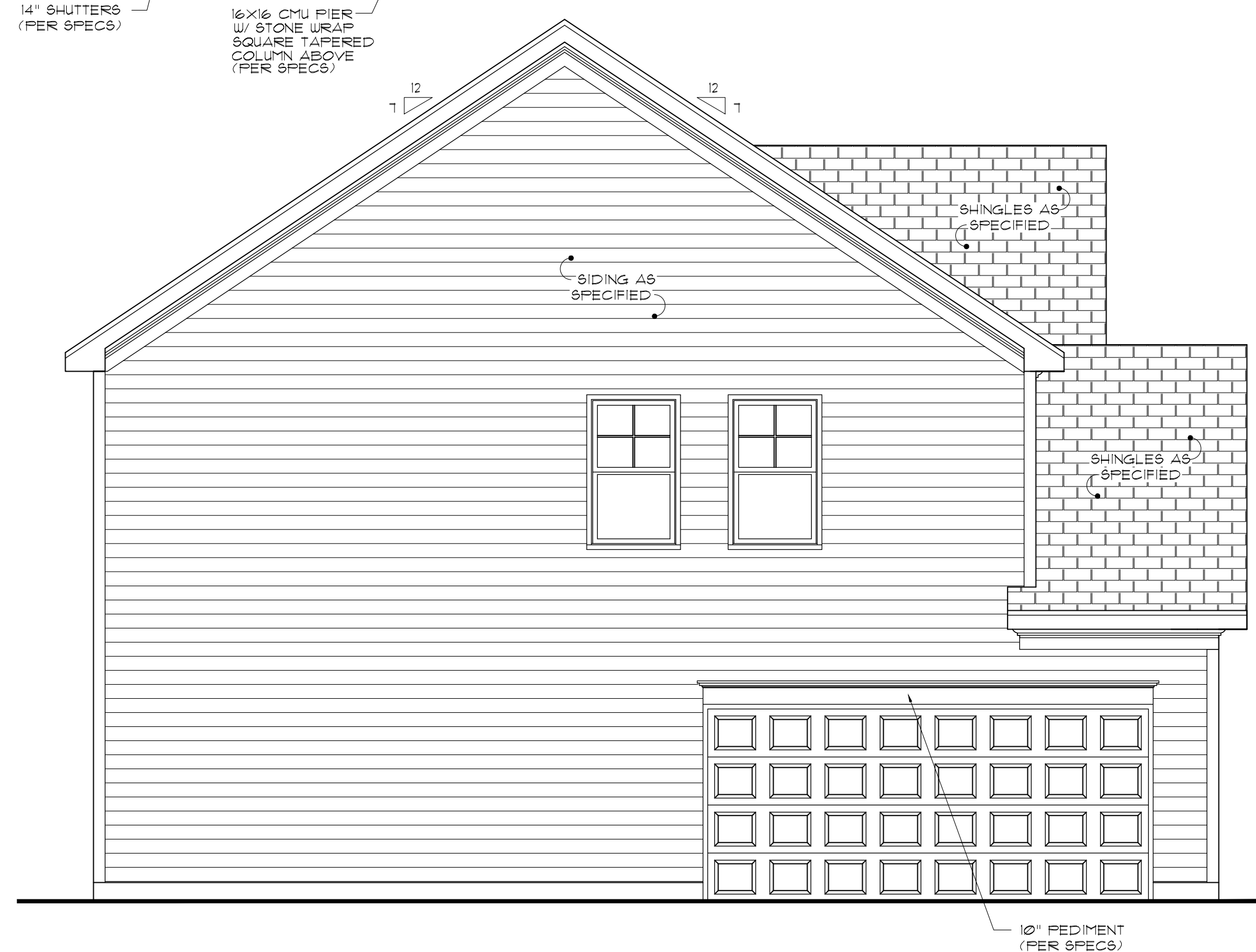
1363 SQ. FT. OF ATTIC / 300 = 4.54 SQ. FT. OF INLET AND OUTLET.

VENTILATION MAY BE REDUCED 50% WHEN VENTILATORS ARE USED AT LEAST 3'-0" ABOVE THE CORNICE VENTS.



**SIDELOAD OPTION
FRONT ELEVATION-"C"**

SCALE: 1/4"=1'



**SIDELOAD OPTION
LEFT SIDE ELEVATION-"C"**

SCALE: 1/4"=1'

www.frazierhomedesign.com
FRAZIER HOME DESIGN, LLC.
 2840 PLAZA PLACE, SUITE 320
 RALEIGH, NC 27612
 OFFICE: (919)-424-7245

GARY ROBINSON HOMES
"THE INVERNESS"

DATE:	07/25/2012
DRAWN BY:	JJ
REVISION DATE:	01/22/2014 JJ

SIDELOAD OPT C

SHEET NO.
A11

8" FASCIA
(PER SPECS)
3-5/8" CROWN
(PER SPECS)
6" FRIEZE
(PER SPECS)
5" CORNER BOARD
(PER SPECS)



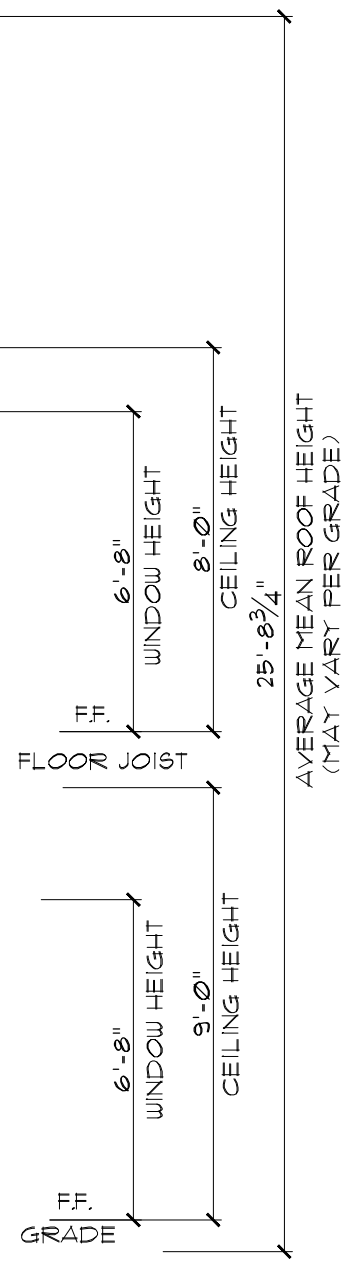
SIDELOAD OPTION
FRONT ELEVATION-"D"

SCALE: 1/4"=1'

ATTIC VENTILATION

1363 SQ. FT. OF ATTIC / 300 = 4.54 SQ. FT. OF INLET AND OUTLET.

VENTILATION MAY BE REDUCED 50% WHEN VENTILATORS ARE USED AT LEAST 3'-0" ABOVE THE CORNICE VENTS.



SIDELOAD OPTION
LEFT SIDE ELEVATION-"D"

SCALE: 1/4"=1'

10" PEDIMENT
(PER SPECS)

www.frazierhomedesign.com

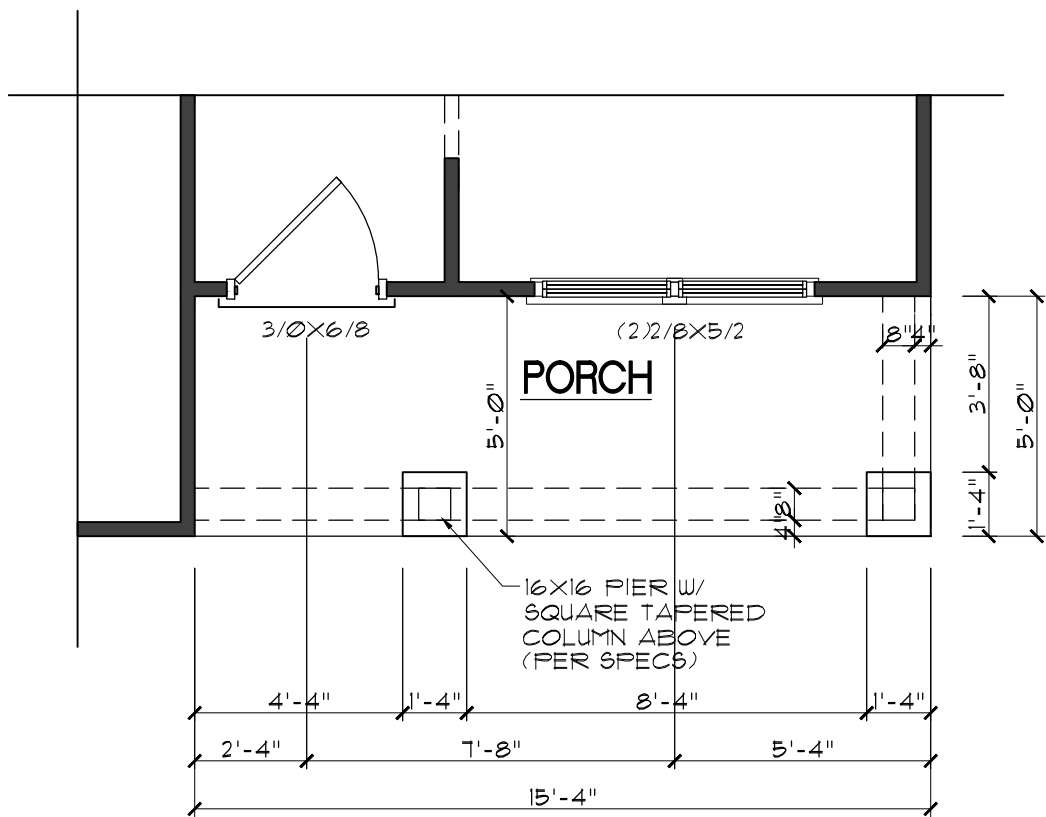
FRAZIER HOME DESIGN, LLC.
 2840 PLAZA PLACE, SUITE 320
 RALEIGH, NC 27612
 OFFICE: (919)-424-7245

GARY ROBINSON HOMES
"THE INVERNESS"

DATE:	07/25/2012
DRAWN BY:	JJ
REVISION DATE:	01/22/2014 JJ

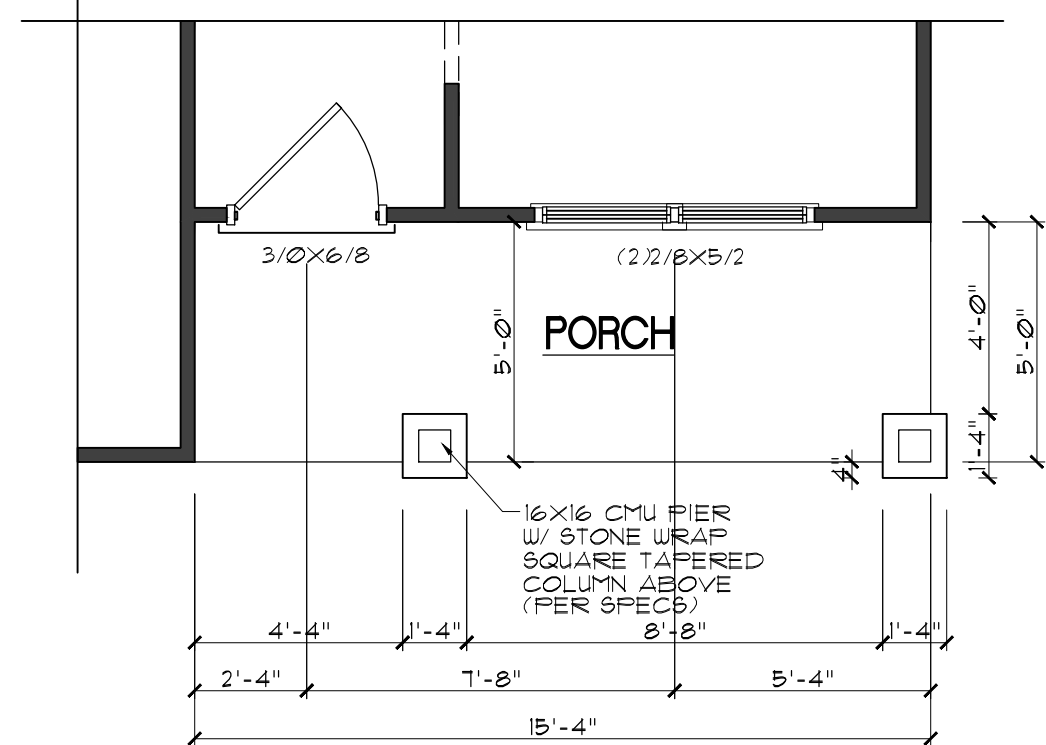
SIDELOAD OPT D

SHEET NO.
A12



PARTIAL FIRST FLOOR - "B", "D"

SCALE: 1/4"=1'

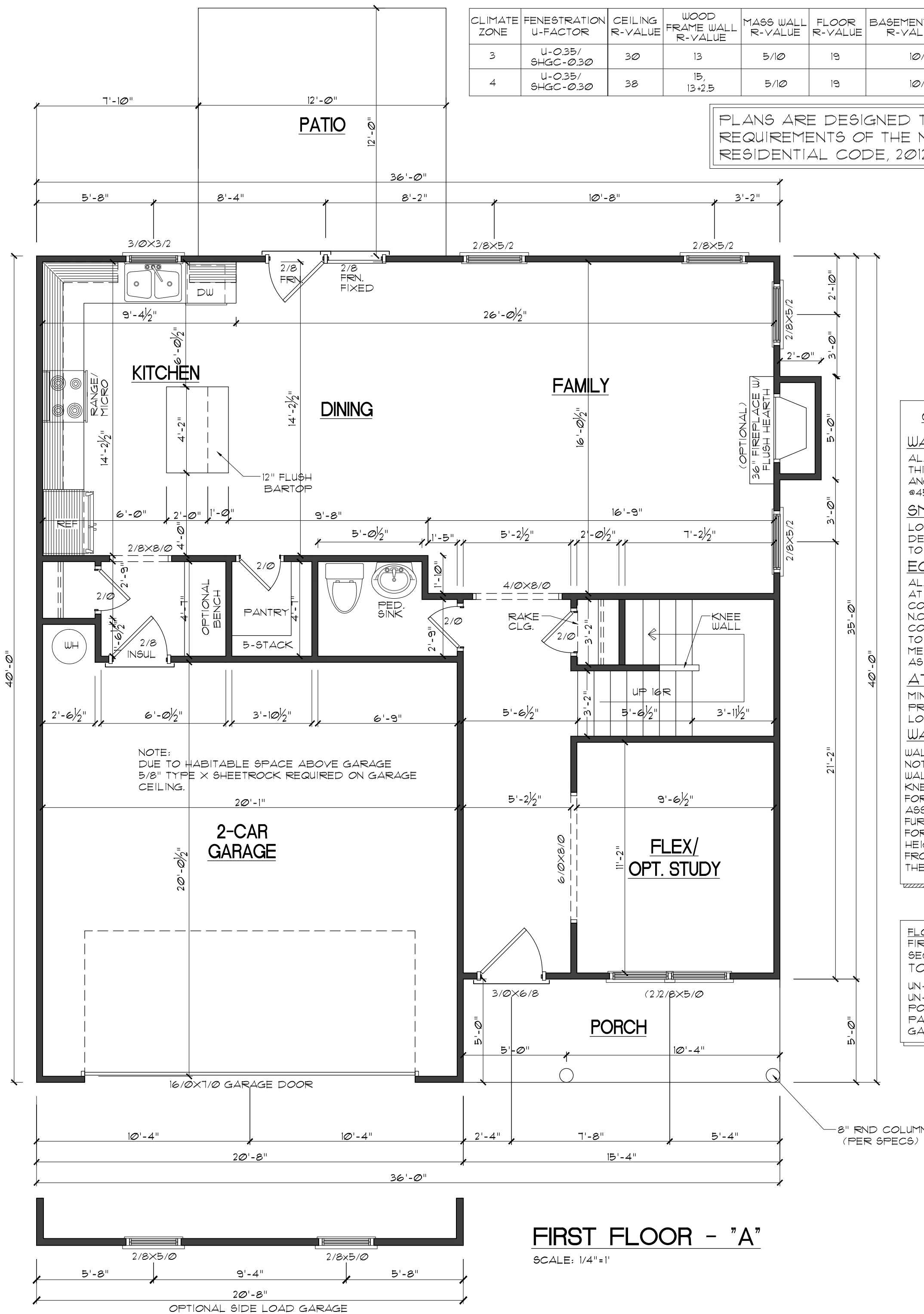


PARTIAL FIRST FLOOR - "C"

SCALE: 1/4"=1'

CLIMATE ZONE	FENESTRATION U-FACTOR	CEILING R-VALUE	WOOD FRAME WALL R-VALUE	MASS WALL R-VALUE	FLOOR R-VALUE	BASEMENT WALL R-VALUE	SLAB R-VALUE & DEPTH	CRAWL SPACE WALL R-VALUE
3	U-0.35/ SHGC-0.30	30	13	5/10	19	10/13	0	5/13
4	U-0.35/ SHGC-0.30	38	15, 13+2.5	5/10	19	10/13	10.2 FT.	10/13

PLANS ARE DESIGNED TO MEET THE REQUIREMENTS OF THE NORTH CAROLINA RESIDENTIAL CODE, 2012 EDITION



FIRST FLOOR - "A"

SCALE: 1/4"=1'

GENERAL NOTES

WALLS:
ALL WALLS ARE DRAWN 3-1/2" THICK UNO. ANGLED WALL ARE DRAWN #45° UNO.

SMOKE DETECTORS:
LOCATION AND NUMBER OF DETECTORS SHALL CONFORM TO NEC.

EGRESS:
ALL BEDROOMS MUST HAVE AT LEAST ONE WINDOW WHICH CONFORMS TO R-310 OF THE N.C. BLDG. CODE. IT IS THE CONTRACTOR'S RESPONSIBILITY TO VERIFY CHOSEN WINDOWS MEET EGRESS REQUIREMENTS AS MANUFACTURERS VARY.

ATTIC ACCESS:
MIN. ATTIC ACCESS SHALL BE PROVIDED BY BUILDER AND LOCATED ON SITE.

WALL/CEILING HGT.
WALL AND CEILING HEIGHT NOTES ARE BASED ON NOMINAL WALL SIZE. KNEE WALL HEIGHT LABELS FOR WALLS UNDER RAFTERS ASSUME AN EXTRA 2" FOR FURRING (IN HEATED SPACES) FOR INSULATION. THE WALL HEIGHT REFERS TO THE HGT. FROM THE FLOOR DECKING TO THE BOTTOM OF THE FURRING.

FLOOR AREA:

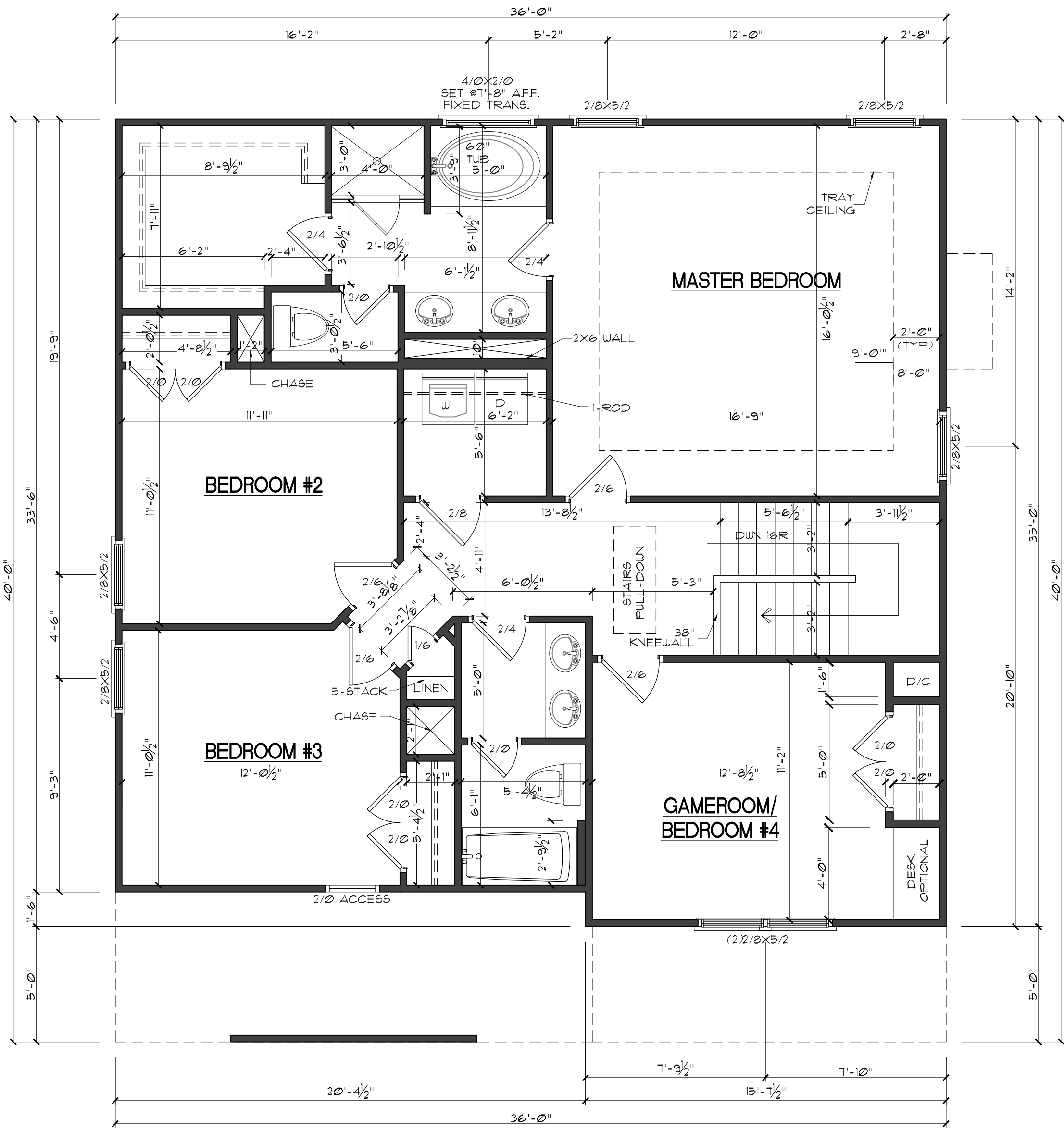
FIRST FLOOR HTD. =	943#
SECOND FLOOR HTD. =	1164#
TOTAL SQ. FT. =	2107#
UN-FINISHED BASEMENT =	943#
UN-FINISHED STORAGE =	70#
PORCH =	77#
PATIO =	144#
GARAGE =	420#

GARY ROBINSON HOMES
"THE INVERNESS"

DATE: 07/25/2012
 DRAWN BY: JJ
 REVISION DATE: 01/22/2014 JJ

FIRST FLOOR

SHEET NO.
A13



SECOND FLOOR

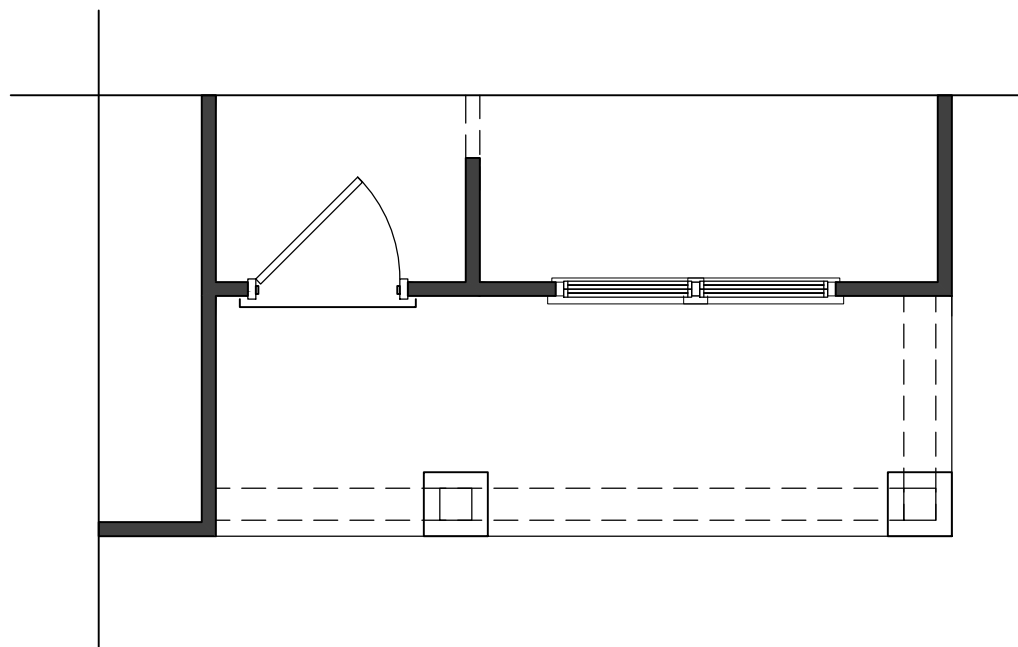
SCALE: 1/4"=1'

GARY ROBINSON HOMES
"THE INVERNESS"

DATE:	07/25/2012
DRAWN BY:	JJ
REVISION DATE:	01/22/2014 JJ

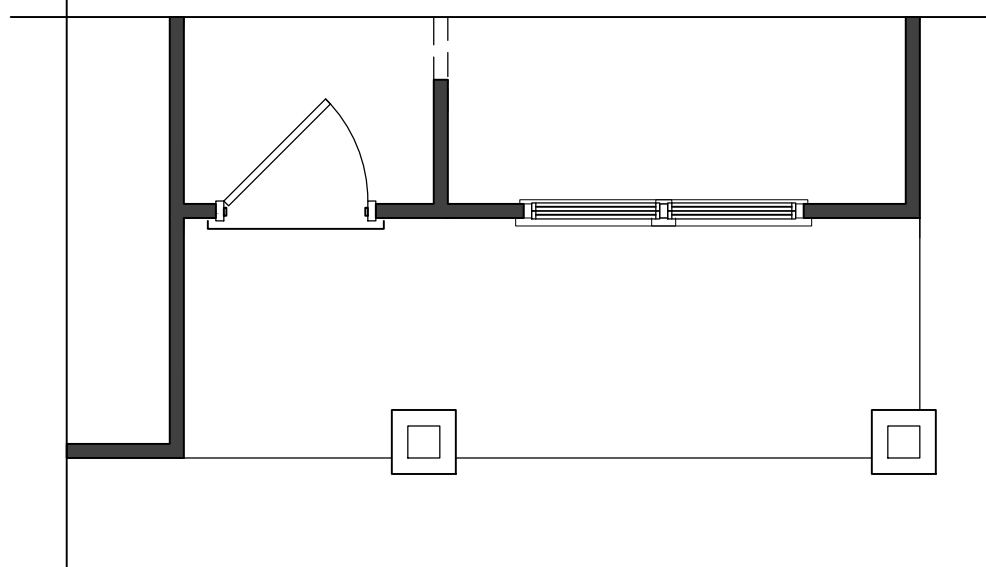
SECOND FLOOR

SHEET NO.
A14



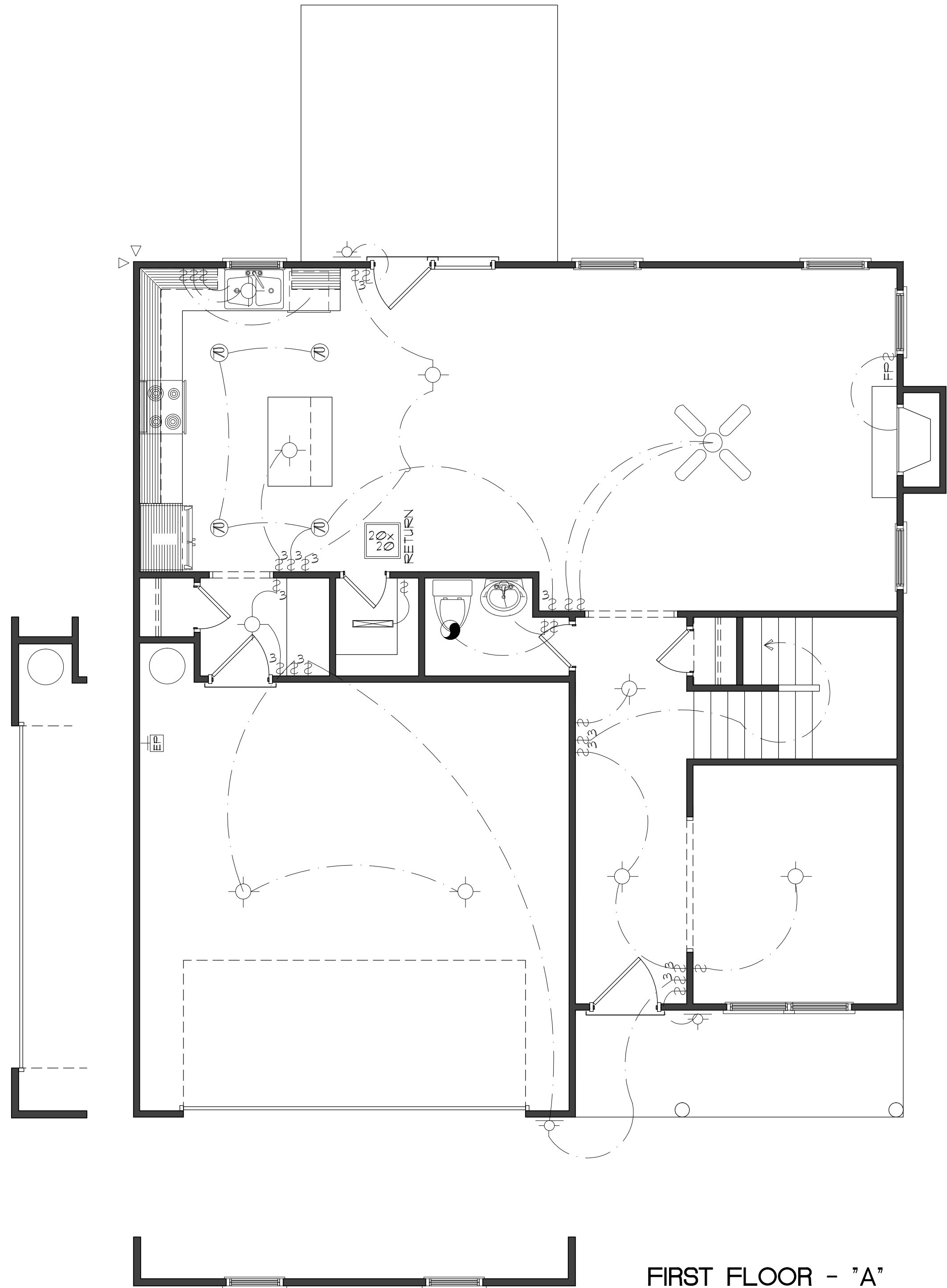
**PARTIAL
FIRST FLOOR - "B", "D"**

SCALE: 1/4"=1'



**PARTIAL
FIRST FLOOR - "C"**

SCALE: 1/4"=1'



FIRST FLOOR - "A"

SCALE: 1/4"=1'

ELECTRICAL LEGEND			
⌘	4-WAY SWITCH	⊖	WALL MOUNT INCANDESCENT BAR LIGHT
⌘	SINGLE POLE SWITCH	⊕	DUPLEX OUTLET
⌘	3-WAY SWITCH	⊕ _{CH}	COUNTER HEIGHT OUTLET RECEPTABLE
⊙	SURFACE MOUNTED LIGHT	⊕	DUPLEX OUTLET-SPLIT WIRED
⊠	CABLE JACK	⊙	EXHAUST FAN
⊠	1 BULB FLUORESCENT	⊙	EYEBALL LIGHT
⊠	2 BULB FLUORESCENT	▽▽	SPOT LIGHT
▽	PHONE JACK	⊖	RECESSED LIGHT
⊕ _{GFI}	GROUND FAULT INTERRUPT RECEPTABLE	⊕	CEILING FAN
⊕ _{220V}	220 VOLT RECEPTABLE		
⊕	WALL MOUNTED LIGHT		

GARY ROBINSON HOMES
"THE INVERNESS"

DATE: 07/25/2012
 DRAWN BY: JJ
 REVISION DATE: 01/22/2014 JJ

**FIRST FLOOR
 ELECTRICAL PLAN**

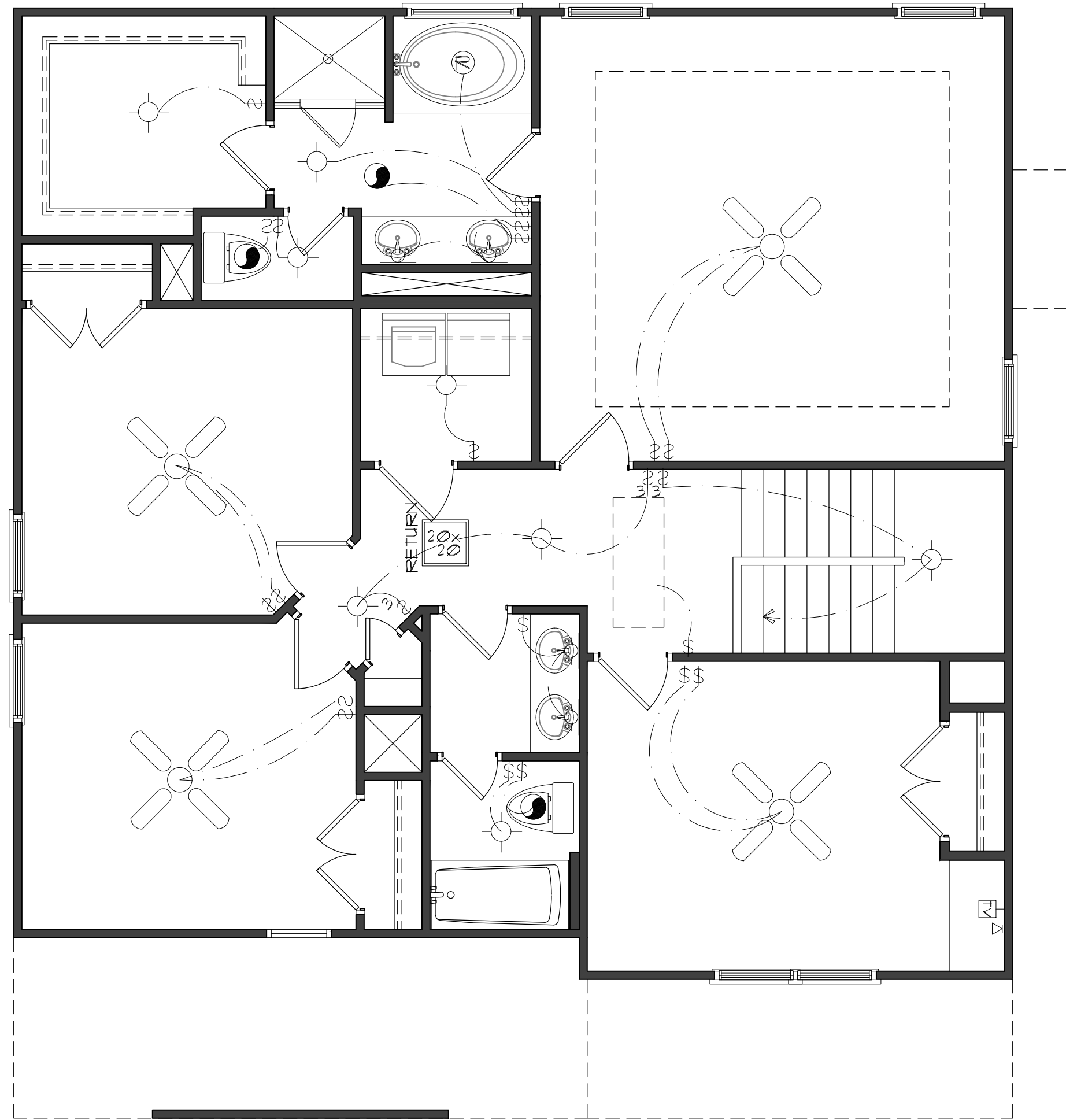
SHEET NO.
E1

GARY ROBINSON HOMES
"THE INVERNESS"

DATE: 07/25/2012
 DRAWN BY: JJ
 REVISION DATE: 01/22/2014 JJ

**SECOND FLOOR
 ELECTRICAL PLAN**

SHEET NO.
E2

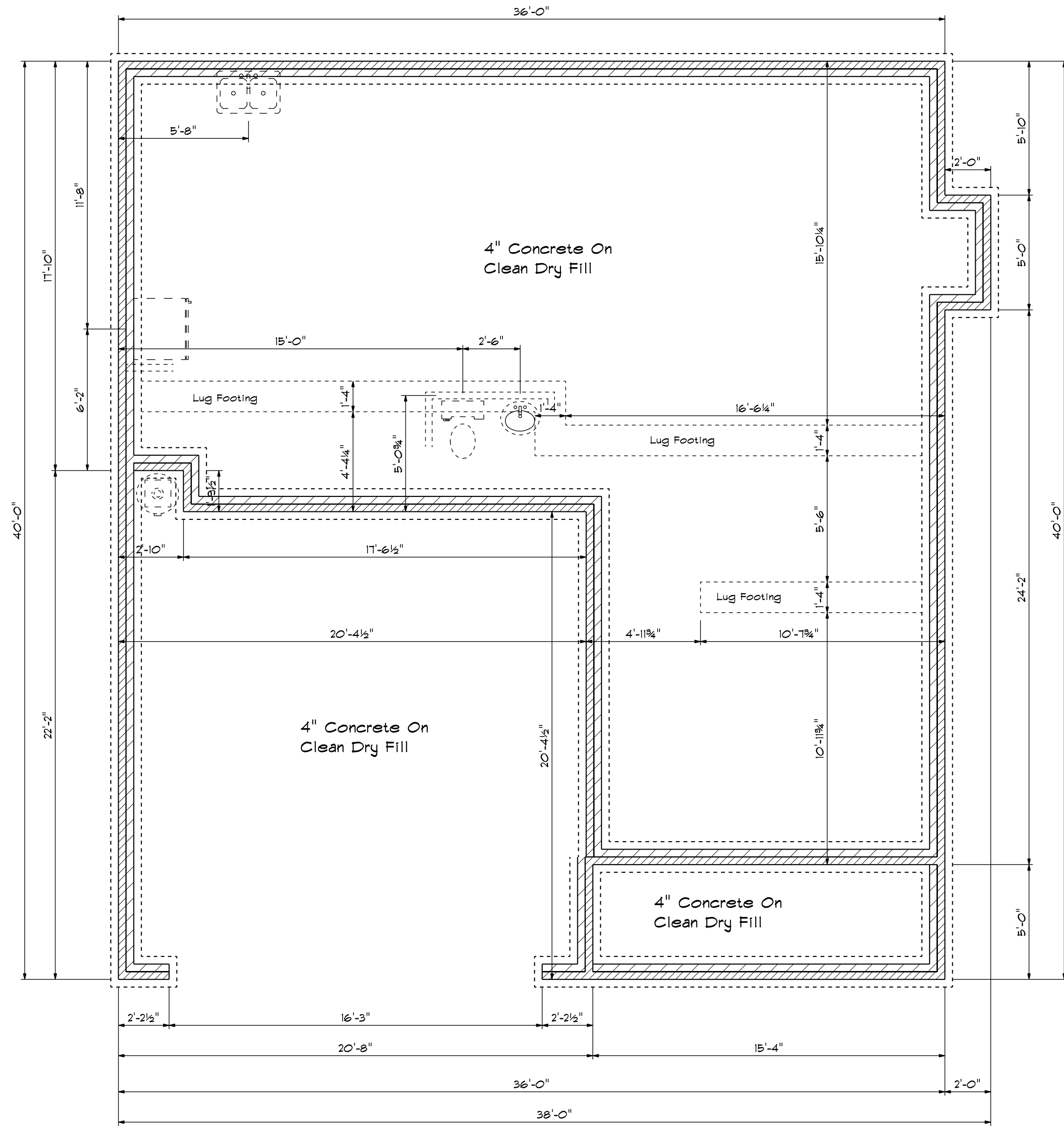


SECOND FLOOR

SCALE: 1/4"=1'

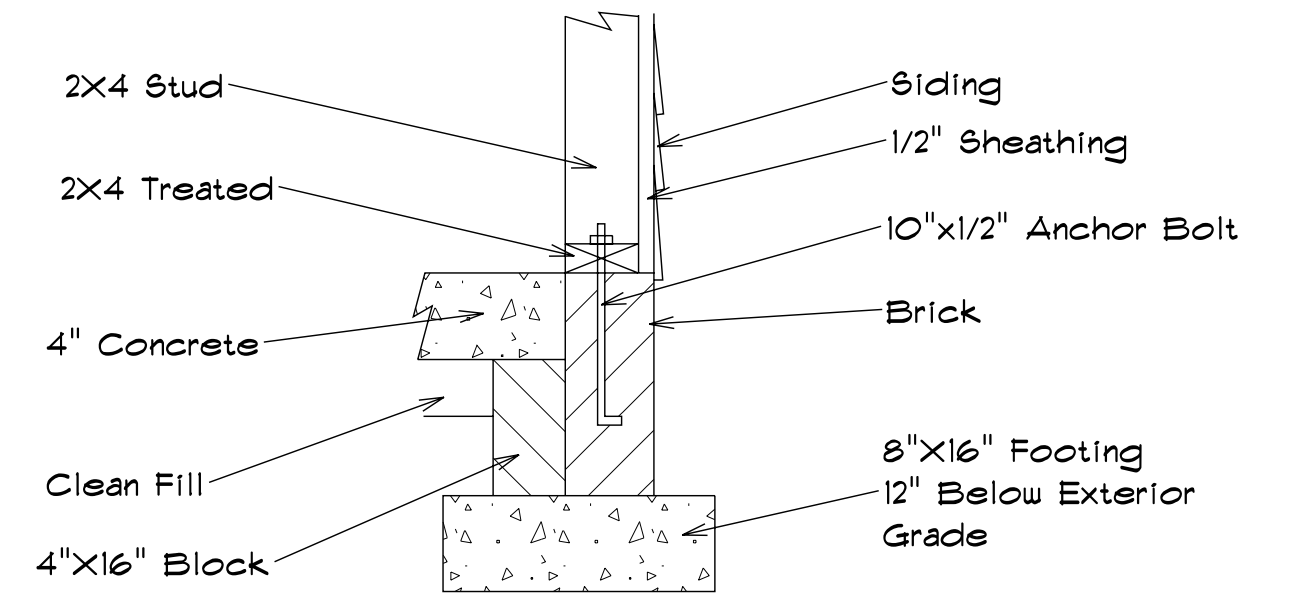
ELECTRICAL LEGEND

\$ ₄	4-WAY SWITCH	⊖	WALL MOUNT INCANDESCENT BAR LIGHT
\$	SINGLE POLE SWITCH	⊕	DUPLEX OUTLET
\$ ₃	3-WAY SWITCH	⊕ _{CH}	COUNTER HEIGHT OUTLET RECEPTABLE
⊙	SURFACE MOUNTED LIGHT	⊖	DUPLEX OUTLET-SPLIT WIRED
⊠	CABLE JACK	⊙	EXHAUST FAN
▭	1 BULB FLUORESCENT	⊙	EYEBALL LIGHT
⊠	2 BULB FLUORESCENT	▽ ▽	SPOT LIGHT
▽	PHONE JACK	⊖	RECESSED LIGHT
⊕ _{GFI}	GROUND FAULT INTERRUPT RECEPTABLE	⊕	CEILING FAN
⊕ _{220V}	220 VOLT RECEPTABLE		
⊕	WALL MOUNTED LIGHT		

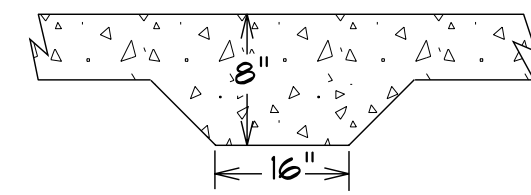


Foundation Plan

Foundation Detail Siding



Lug Footing Detail



DATE: January 23, 2014

REVISED

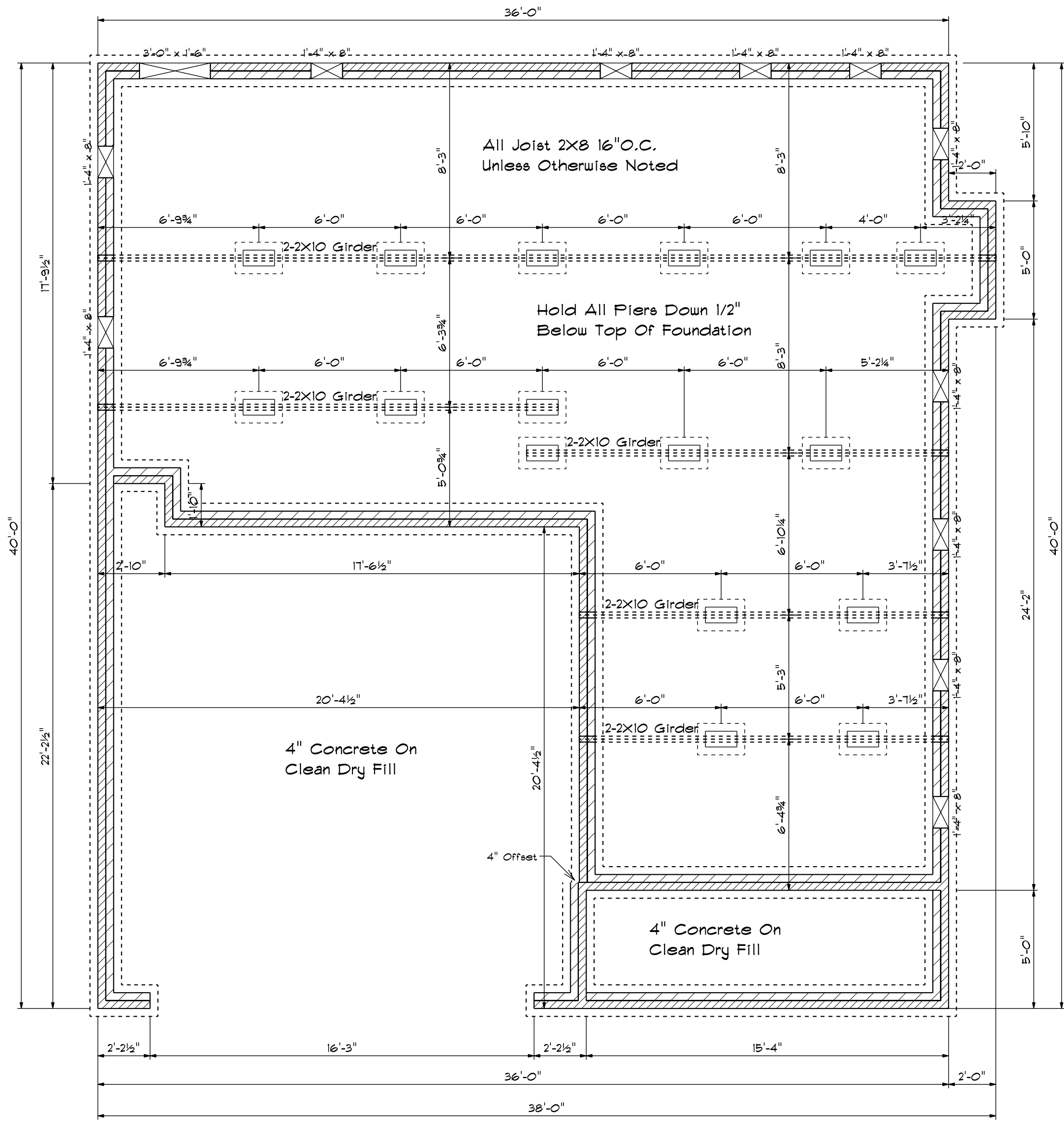
DRAWING#

SCALE: 1/4"

DRAWN BY

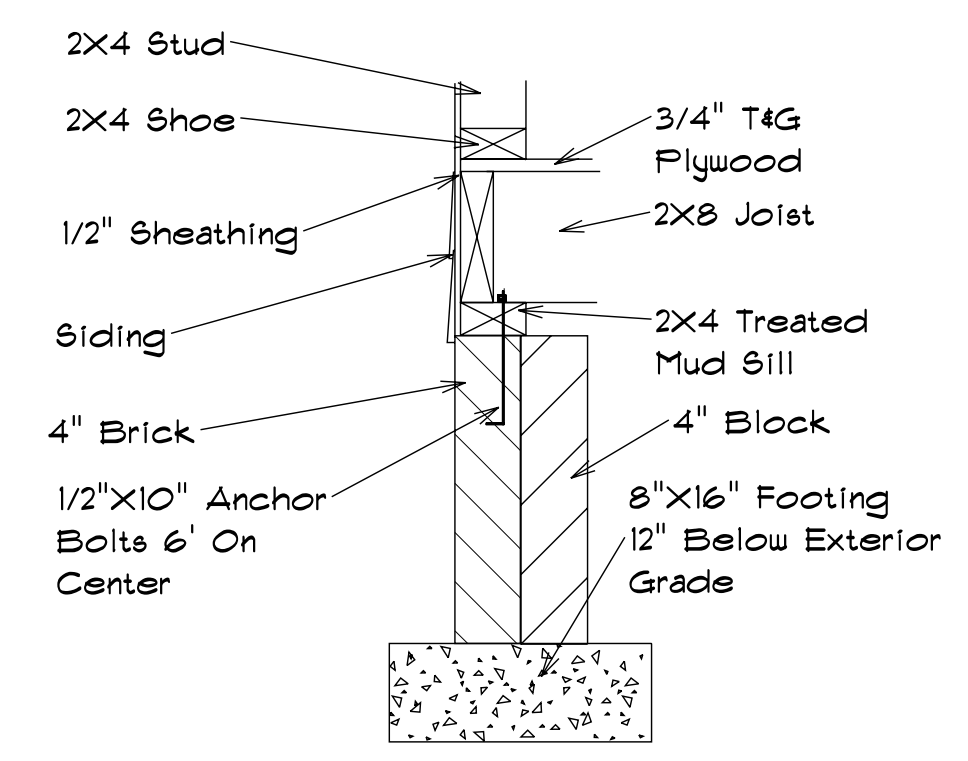
APPROVED

The Inverness

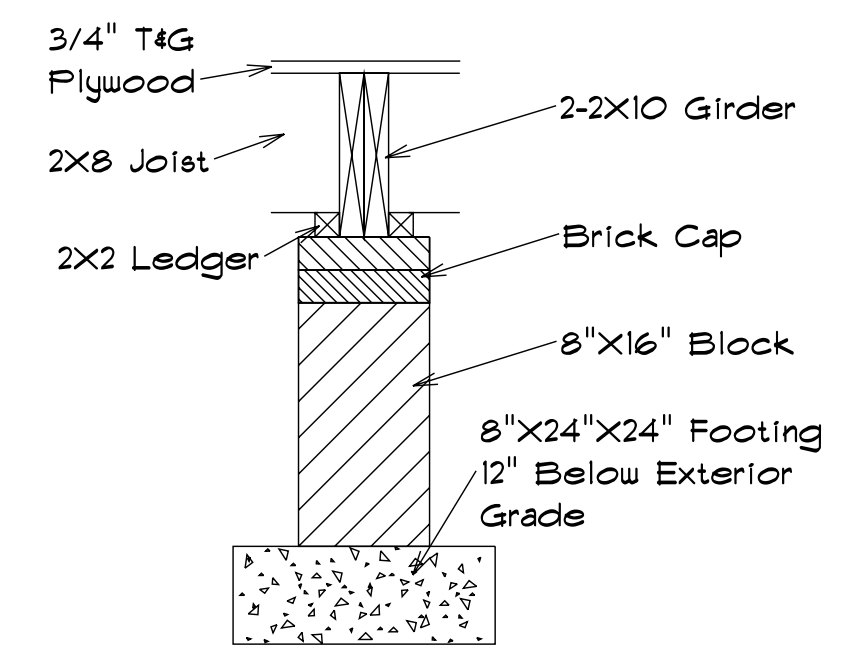


Foundation Plan

Foundation Detail



Footing & Pier Detail



FOUNDATION VENTILATION

900 Sq.Ft. Foundation Area
 Requires 6.23 Sq.Ft. Ventilation.
 With 6 Mil. Poly. Plans Indicate
 Vents For Adequate Cross
 Ventilation.

DATE: January 23, 2014

REVISED

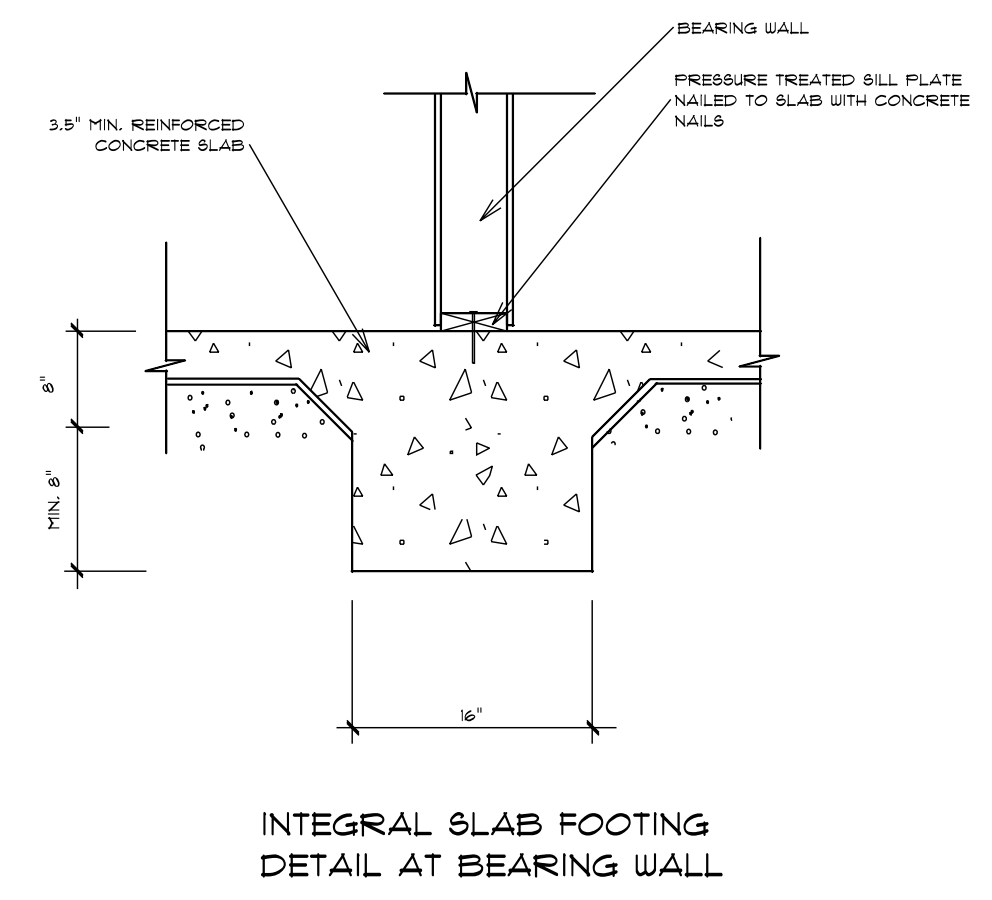
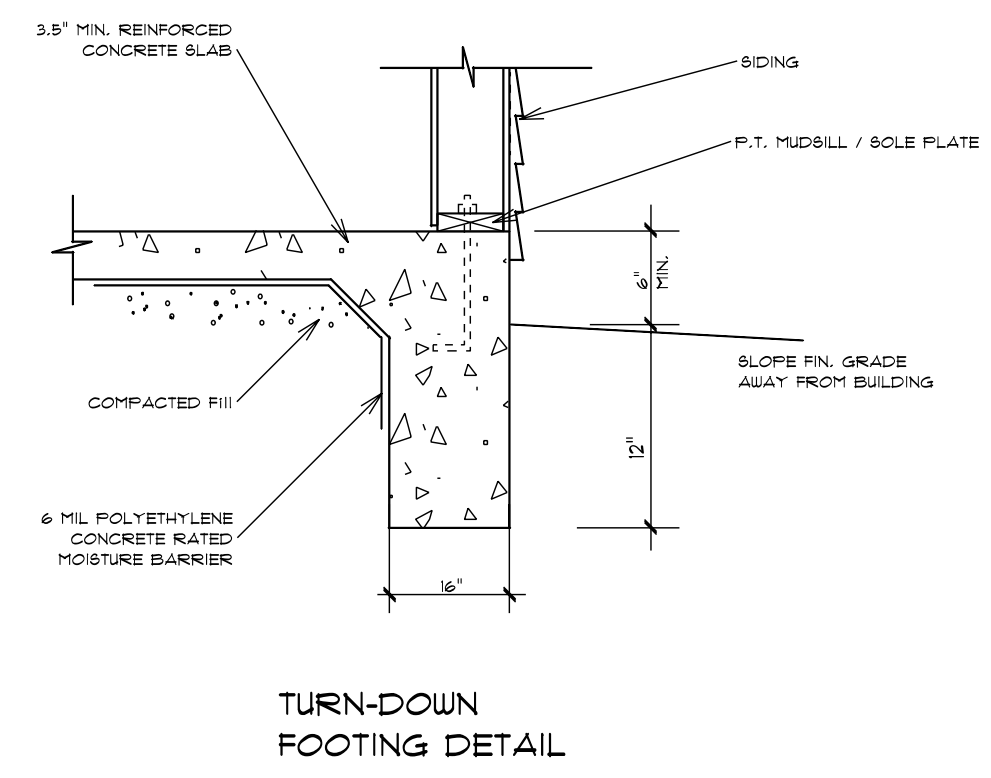
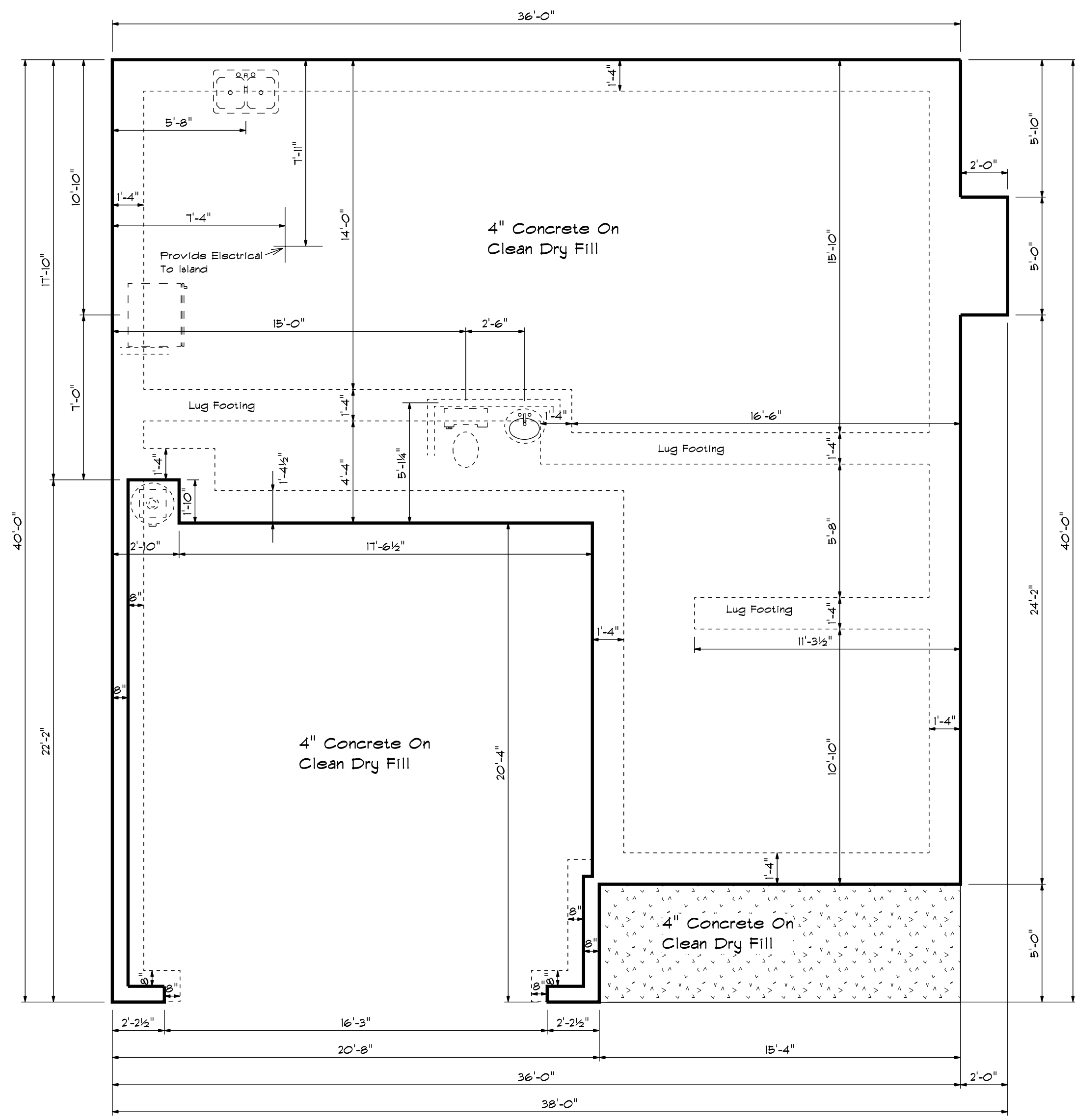
DRAWING#

SCALE: 1/4"

DRAWN BY

APPROVED

The Inverness



Foundation Plan

DATE: May 05, 2015
 REVISIONS
 DRAWING#

SCALE: 1/4"
 DRAWN BY
 APPROVED

The Inverness